



# Light Dome SE

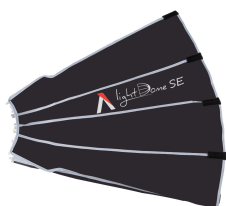
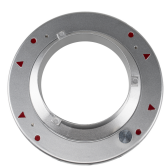
## Main Features

- **33.5" Diameter:** Large Aperture with Compact Depth 85cmx45cm (33.46"x17.72")
- **Lightweight and Portable:** Weighing just over 2 pounds, the Light Dome SE pairs effortlessly with all Bowens Mount LED lights.
- **Flexible Fiberglass Rods:** 16 lightweight and flexible fiberglass rods ensure the Light Dome SE maintains a circular shape for perfect eyelights and light falloff.
- **High Quality Reflective Fabric:** The Light Dome SE utilizes the same high quality reflective material as the Light Dome II, for maximum output.
- **Two Quality Diffusion Fabrics:** The Light Dome SE gives all users the flexibility to have softer light, but include two front diffusion fabrics, 1.5 and 2.5 stop.
- **Internal 1.5 Stop Baffle:** The internal baffle softens the initial point source of light, allowing it to fill the entire softbox more evenly.
- **45° Fabric Light Control Grid**
- **Compatible with the Bowens Mount LED lights,** such as the Amaran 100d, 100x, 200d, & 200x, and Aputure LS 600d Pro, 300d II, 300x, 120d II, etc.

## Specifications

Softbox Dimensions	Built	85.0 x 85.0 x 45.0cm / 33.46 x 33.46 x 17.72in
	Collapsed	60.0 x 18.0 x 18.0cm / 23.62 x 7.09 x 7.09in
Front Fabric Diffusion 1	Diffusion Stops	1.5 Stop
	Dimensions	82.0cm / 32.28in
Front Fabric Diffusion 2	Diffusion Stops	2.5 Stop
	Dimensions	82.0cm / 32.28in
Inner Baffle Diffusion	Diffusion Stops	1.5 Stop
	Dimensions	24.0cm / 9.45in
Eggcrate	Beam Angle	45°
	Dimensions	820mm / 32.28in
Speed Ring Adapter	Standard Bowens Mount	
Total Weight	1.1kg / 2.4lb	

## More Pictures



## Product Description

The Light Dome SE is the perfect lighting modifier for content creation, interviews, and portrait photography. When attached to a Bowens Mount light such as the Amaran 100d/x and Amaran 200d/x, or Aputure 120d II, it transforms any hard light into a beautiful soft light.

When it comes to filming faces, creating a soft quality of light is the key to making people look good. With it's wide 33.5-inch diameter, the Light Dome SE creates a beautiful soft light specially designed to blanket your subject, hide blemishes, and make everyone look stunning on-camera.

In order to be creative, an artist must have options. The Light Dome SE includes two types of diffusion fabric, one light (1.5 stops) and one heavy (2.5 stops), allowing users to pick and choose the perfect level of softness for every subject that they film.

When filming any subject, reflections are bound to occur. Many are desirable like the catch light of a model's eyes. Using 16 fiberglass rods, the Light Dome SE guarantees beautiful circular reflections are always pleasing to the eye.

Weighing in at roughly 1kg (2.4lbs), the Light Dome SE is one of the most portable lighting modifiers ever. Every Light Dome SE also ships with its own carrying bag to guarantee that no matter where your shoot takes you, your gear will arrive safe, sound and ready-to-go.

The Light Dome SE is designed to grow along with your creative journey. Featuring the most universal mount possible, we created this modifier to be versatile and compatible with not only the Amaran 100d/x and Amaran 200d/x, but also the Aputure 120d, Aputure 300d, and even many other third-party Bowens Mount lights.

## What's in the Box

Name	Quantity
Light Dome SE Softbox	1
Front Fabric Diffusion (1.5 Stop)	1
Front Fabric Diffusion (2.5 Stop)	1
Inner Baffle Diffusion	1
Fabric Light Control Grid	1
Speed Ring Adapter	1
Light Dome SE Carrying Bag	1

## Sales & Shipping Information

Product Name	Light Dome SE
SKU	AMOLIGHTDOMESE
UPC	6971842181537
Battery	N/A
Package Dimensions	63 x 22.6 x 8cm / 24.8 x 8.9 x 3.1in
Net Weight	1.1kg / 2.4lbs
Gross Weight	1.8kg / 4lbs
Carton Quantity	5
Carton Dimensions	67.5 x 47 x 28cm / 26.6 x 18.5 x 11in
Carton Weight	9.6kg / 21.2lbs